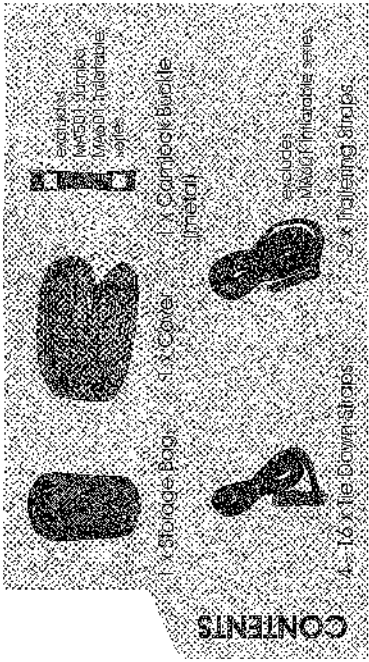
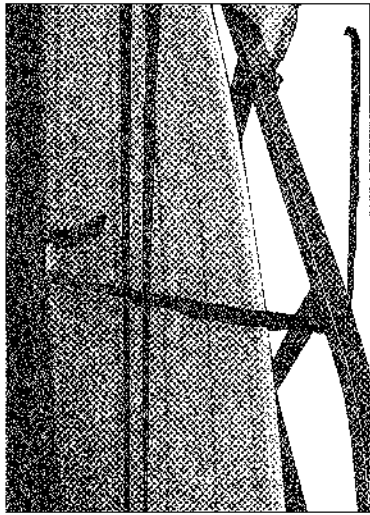


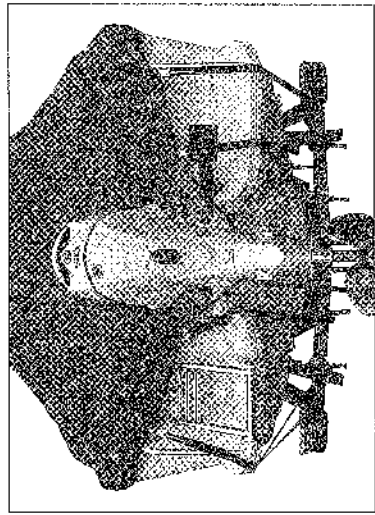
# Fitting Instructions



**NOTE:** Number of Tie-downs will vary according to the size of your cover.

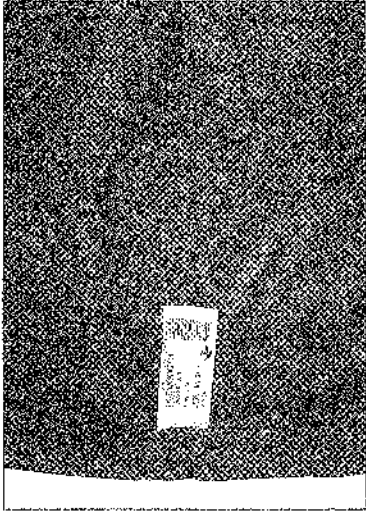


**3.** Thread Tie-down through Webbing Loop and around Trailer. (webbing loops sewn at intervals around cover edge.)

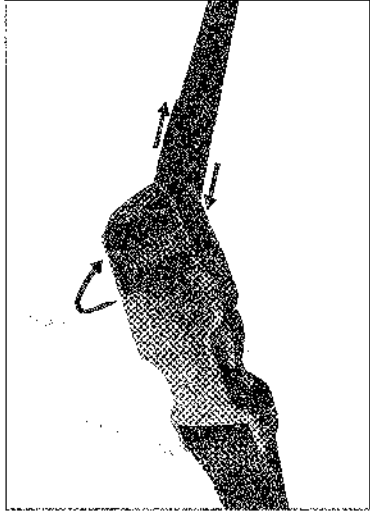


**6.** Thread Hem Webbing through Camlock Buckles and pull through evenly.

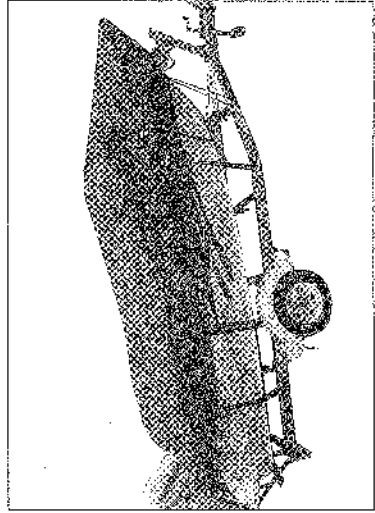
**NOTE:** Due to product upgrade, please refer to these instructions when fitting your cover.



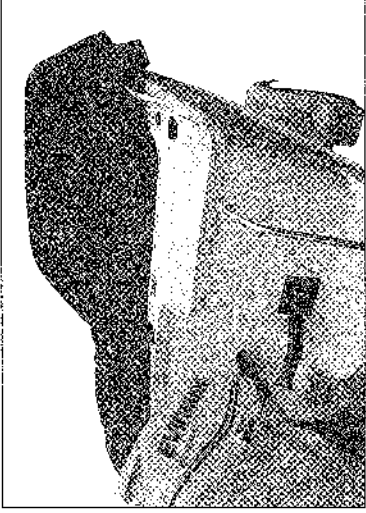
**1.** Locate front of Cover. (Tag indicates front.)



**4.** Thread end of Webbing through Buckle.



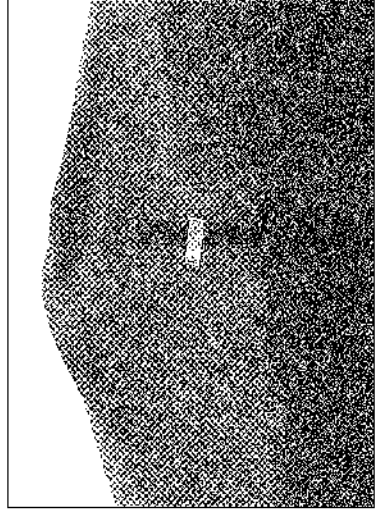
**7.** Tighten all Buckles.



**2.** Fit front end of cover over Bow and unroll over Boat.



**5.** Repeat steps 3 & 4 on all Webbing Loops.



**8.** Thread Trailering Straps through Webbing Strips and around boat. Tighten. (Webbing strips located at intervals on top of cover).